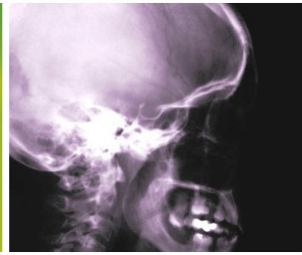


Friday  
May 7, 2010

Frederic Gaspard Theatre (formerly Theatre A)  
Basic Medical Sciences Building  
745 Bannatyne Ave, Winnipeg, MB



## FACULTY

**Ivy Oandasan** MD MHSc CCFP  
Associate Professor  
Dept of Family & Community Medicine  
University of Toronto

**John Embil** MD FRCPC  
Associate Professor  
Dept of Internal Medicine & Med Micro

**Vince Woo** MD FRCPC  
Assistant Professor  
Dept of Internal Medicine  
University of Manitoba

**Shawn Bugden** BSc(Pharm), MSc  
Drug Evaluation Pharmacist  
Prescription Information Services  
of Manitoba (PrISM)

**Corey Baillie** MD FRCPC  
Rheumatologist  
Winnipeg (Manitoba)

**Fred Aoki** MD FRCPC  
Professor  
Dept of Internal Medicine & Med Micro  
University of Manitoba

**Kyle MacNair** BSc(Pharm) ACPR  
Drug Evaluation Pharmacist  
Prescription Information Services  
of Manitoba (PrISM)

Visit our website at  
[www.umanitoba.ca/cme](http://www.umanitoba.ca/cme)

## THERAPEUTIC UPDATE

### OVERVIEW

The Continuing Medical Education (CME) Bannatyne Campus Program for Family Physicians is designed to provide a wide range of timely and challenging topics relevant to an office based practice. Working closely with doctors and professional organizations across Manitoba, programs are designed to address current issues relevant to the needs and demands of physicians. These programs are flexible, accessible, innovative and responsive.

Continuing Medical Education is committed to providing high quality educational programs to Manitoba physicians. The main program objectives are to enhance clinical competence and improve patient care.

This session will provide information on new therapies as well as overview of potential for improvements. The session will feature a combination of plenary sessions and panel discussions that will also allow the participant to identify the necessary elements to establish effective collaborations for prevention and management of chronic illness.

### This program will be of interest to:

Family physicians, pharmacists, nurse-practitioners, nurses and other allied health professionals.



UNIVERSITY OF MANITOBA | FACULTY OF MEDICINE  
Continuing Medical Education

## COURSE OBJECTIVES:

At the end of these lectures, the learner will be able to:

- Describe the necessary elements for effective collaboration.
- Summarize recent advances and updates in the management of diabetes, infectious disease and osteoporosis.
- Identify target populations for HPV and Herpes Zoster vaccines.
- Manage safe and effective storage of vaccines in the office practice.
- Evaluate the risks associated with medications and the elderly.
- Identify opportunities and barriers to implementing collaborative practice.

### Going Green!



**Printed syllabus will not be available at the program.**

Presentations made available by speakers will be on the CME website the Wednesday prior to the Friday program date.

1. Go to [umanitoba.ca/cme](http://umanitoba.ca/cme).
2. On the left hand side of the page, click on "Conferences and Courses".
3. On the right hand side of the page, go to "Bannatyne Campus Program".
4. Under the current month's program brochure, find the presentations for that month's program (depending on speakers' consent).
5. Click on the required presentation.
6. Presentations will remain on the website for approximately one month.

If you choose to print the presentation(s):

1. Click on either File-Print or the print icon in the PowerPoint window.
2. Go to "Page Scaling" click on down arrow, choose "Multiple Pages per Sheet".
3. Enter number of "Pages Per Sheet" (slides per page).
4. Print.

## AGENDA

- 08:30-09:00 **Registration & Coffee**
- 09:00-09:05 **Welcome & Introductions**  
*Rick Ross, MD*
- 09:05-09:45 **Collaborative Practice: Improving patient care**  
*Ivy Oandasan, MD*
- 09:45-10:30 **Hot Topics in Infectious Disease**  
*John Embil, MD*
- 10:30-10:45 **Diabetes Update: Part 1**  
Reflections on Blood Glucose Monitoring  
*Shawn Bugden, BSc(Pharm)*
- 10:45-11:00 **Break**
- 11:00-11:45 **Diabetes Update: Part 2**  
Gliptins & New Insulins  
*Vince Woo, MD*
- 11:45-12:15 **Medications That You May Want to Use Less**  
*Kyle MacNair, BSc(Pharm)*
- 12:15-13:00 **Lunch**
- Bone Health Update**
- 13:00-13:15 **The Basics: Vitamin D & Calcium**  
*Shawn Bugden, BSc(Pharm)*
- 13:15-14:00 **New Agents for Osteoporosis**  
*Cory Baillie, MD*
- 14:00-14:45 **Vaccine Update**  
New Vaccines: Zostavax & Cervarix  
*Fred Aoki, MD*
- 14:45-15:00 **Collaborative Practice: Putting it into action**  
*Ivy Oandasan, MD*
- 15:00 **Adjournment**

\* Program is current at time of printing; however, all speakers and topics are subject to change.

**Your opportunity to inform the Bannatyne Campus CME Planning Committee as to what topics, sub-topics and speakers you would like added to next year's program is available at "Survey Monkey" on the CME web site. For more information, contact Jacqueline at 480-1368.**



## GENERAL INFORMATION

### REIMBURSEMENT OF REGISTRATION FEES

Physicians may be eligible for reimbursement of registration fees and expenses to attend CME courses from a fund administered by Doctors Manitoba. For more information regarding this, please go to [www.docsmb.org/](http://www.docsmb.org/) or call (204)985-5844.

### REFUND POLICY

A registration refund will be made upon written request prior to April 30, 2010; \$30 will be retained for administrative costs. No refunds will be made for cancellations after April 30, 2010.  
NOTE: Refunds are processed **only** on return of the original receipt and must be returned within 30 days.

### CONFIRMATION OF REGISTRATION

Confirmation of registration will be in the form of an official tuition receipt. No other confirmation will be sent.

### DISCLOSURE OF POTENTIAL CONFLICTS OF INTEREST

In keeping with accreditation guidelines, speakers participating in this event have been asked to disclose to the audience any involvement with industry or other organizations that may potentially influence the presentation of the educational material.

### ACCREDITATION

The University of Manitoba Office of Continuing Medical Education is fully accredited by the Committee on Accreditation of the Canadian Medical Schools (CACMS).

## PLANNING COMMITTEE

José François, MD CCFP M Med Ed

Monika Czarnecka, MD

Andy Delli Pizzi, MD CCFP

Diane Labossière, MScN NP

Richard McCammon, MD

Rick Ross, MD

Jeff Toews, M Ed

Jacqueline Crowther

### SESSION CONSULTANT

Karen Grant, PHEc MSc (Network for IP CME)

## STUDY CREDITS

This Program meets the accreditation criteria of the College of Family Physicians of Canada and has been accredited for 5.0 Mainpro-M1 credits.

This activity has also been reviewed and approved for up to 5.0 hours of Category 1 credits for the Physicians Recognition Award of the AMA.

This program has been designated an accredited learning activity (MPhA File No. 30079M) by the Manitoba Pharmaceutical Association for pharmacists in Manitoba

## EXHIBITORS FOR THIS SESSIONS

**Boehringer-Ingelheim**  
**GlaxoSmithKline**  
**Solvay Pharma Inc.**  
**Manitoba e-Health**  
**Neil John Maclean Health Sciences Library**

## UPCOMING SESSIONS

June 11, 2010

**Methadone:**

An introduction to clinical practice

## CONTACT INFORMATION

Office of Continuing Medical Education, Faculty of Medicine, University of Manitoba  
S203-750 Bannatyne Avenue, Winnipeg, MB R3E 0W2 • Phone: (204) 789-3660 • (204) 789-3911

VISIT OUR WEBSITE: [www.umanitoba.ca/cme](http://www.umanitoba.ca/cme)

# Therapeutic Update - Friday, May 7, 2010



**REGISTRATION FEE:** (select)

**Day registration:**

- Physician \$ 150.00
- Pharmacist \$ 100.00
- Nurse & Allied Health \$ 100.00
- Resident \$ 25.00

*\* Medical students may attend at no charge. Course materials and food are not provided.*

**❶ REGISTER BY MAIL**

Mail Registration Form with payment to Office of Continuing Medical Education. *Payable to the UNIVERSITY OF MANITOBA*

**❷ REGISTER BY FAX**

Registration with credit card payment may be faxed to (204) 789-3911.

**REGISTRATION FORM**

PROFESSION :  MD  NURSE  OTHER

FIRST NAME

LAST NAME

ADDRESS

CITY

PROV

POSTAL CODE

AREA CODE

PHONE

AREA CODE

FAX

EMAIL

CHEQUE

VISA

MASTERCARD

CARD NUMBER

PAYMENT





M M

Y Y

SIGNATURE

EXPIRY

 / 



UNIVERSITY OF MANITOBA | FACULTY OF MEDICINE  
Continuing Medical Education

S203-750 Bannatyne Ave.  
Winnipeg, MB R3E 0W2  
Phone: (204) 789-3660  
www.umanitoba.ca/cme